



Gen 2 Hemi Conversion Mounts #109501

B, C & E Body V/8 To Hemi Conversion Mount Installation Instructions

- Mounts are marked P (passenger) and D (drivers). Remove any studs that may be in the block mount holes.
- Use the 6 - 7/16" hex head cap screws included to install the mounts to the block. Be sure to use thread sealant to prevent leaks as the holes are drilled through the block. Torque to 40 – 45 ft. lbs. Ref. photo 1 & 3. On the Passenger side mount, the top bolt (photo 3) is a 7/16" x 1 Button head for extra clearance. To help keep cost down, only that bolt is a button head.

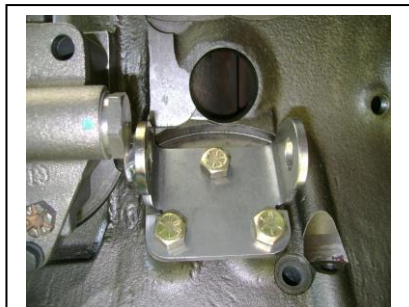


Photo 1 – Driver's

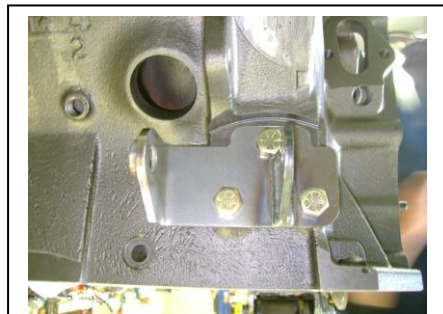


Photo 3 - Passenger

- Install the frame mount portions of the motor mounts with the offset towards the rear of the car using 2 – 1/2" bolts and lock washers. Both the bolts will go in from the front of the engine to the rear. Do not tighten the 1/2" bolts till the engine, transmission and stock exhaust manifold or header install is complete. Ref. photo 2 & 4.

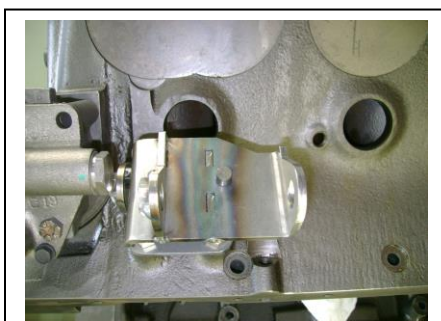


Photo 2 – Driver's

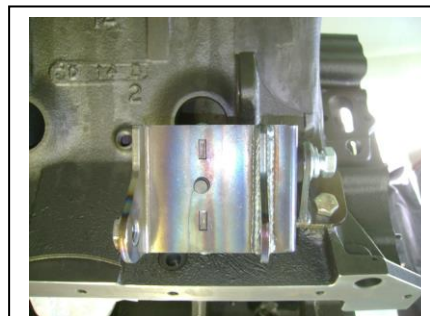


Photo 4 - Passenger

Tin Man Fabrication

21461 Aberdeen St NE, East Bethel MN 55011
www.tinmanfabrication.com

Phone: 763-753-4265
Toll free: 877-866-2338
1/2019



Gen 2 Hemi Conversion Mounts #109501

- Install the engine onto the perch using the last two 1/2" bolts and lock washers.
- If after market headers are used leave drivers side header loose from head until mount bolts are tight. Torque to 70 – 75 ft. lbs.
- If you are using after market headers you may need additional clearance for the drivers side header. This can be achieved by putting the frame side of the mount in place and trimming the exposed upper rearward corner of the perch. Do this before installing the engine.
- Original power brake hemi cars had smaller brake boosters and some were relocated to give needed valve cover clearance. Any booster larger than 10" will be need to removed before engine install. A smaller booster may need to be purchased for needed clearance.
- The original dipstick will need to be bent or an aftermarket flexible version installed. If you opt to bend the original, do it when the engine is out of the car and the left hand mount and exhaust in place.

At Tin Man Fabrication we have taken pride in providing a very high quality product that can fit the needs of many applications. A complete list of Tin Man products is available on our website at www.tinmanfabrication.com.

Thank you for your purchase!
Call 877-866-2338 for Technical Help.

Hardware:

5 - 7/16" x 1 Hex Head

1 – 7/16" x 1 Button Head

4 – 1/2"-13 x 4" Bolts and Lock Washers

Tin Man Fabrication

21461 Aberdeen St NE, East Bethel MN 55011
www.tinmanfabrication.com

Phone: 763-753-4265
Toll free: 877-866-2338
1/2019